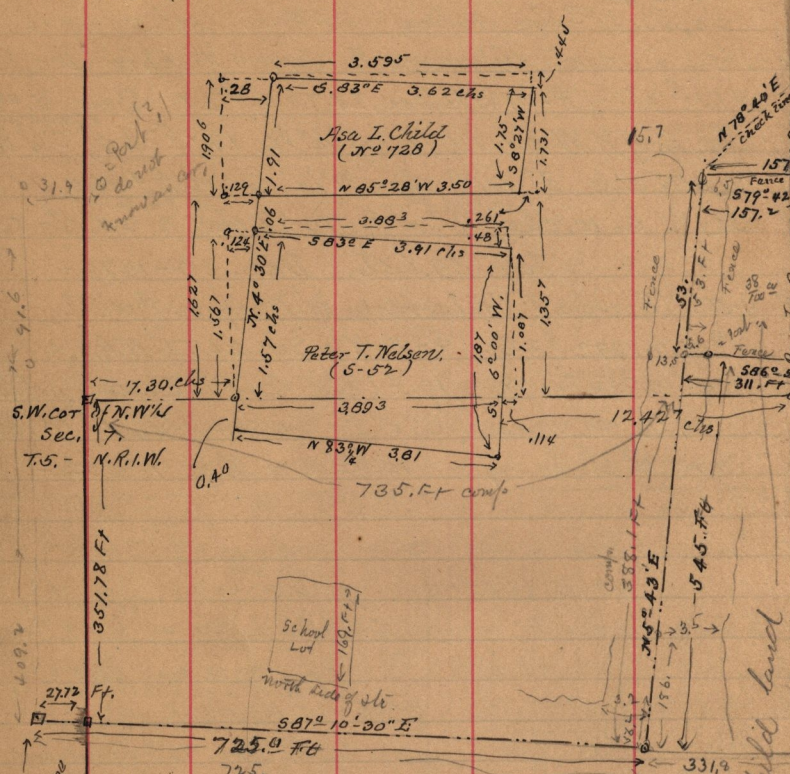


Aug 18-1893.

Survey made for Alf. Child in N.W. 1/4 Sec. 7 - T.5, N. R. 1, W.



Co. Mt. N. 56.
for trees to which see
page 138.

Sec. Book, I.
page 33

See also
page 138. this book.

Plat book page 193
See deeds by M.B. Child in
field book K-page 43.

copy of description in all children
deed. Pt. N.W. 1/4 Sec. 7, T.5, N. R. 1, W.
735. FT. E. x 144.9 ft N
579° 42' E. 157.2
23' E 83.3 FT.
63°-16' W 95.5 FT.
N 311. FT to
700 a.

Alf. Child land